

Corpogen: adaptación en la era digital

María Mercedes Zambrano
mzambrano@corpogen.org
www.corpogen.org

Corporación CorpoGen

Investigación & Biotecnología

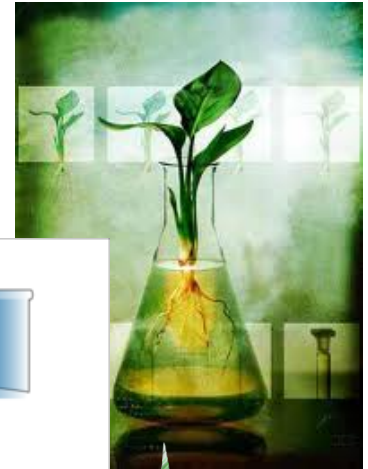
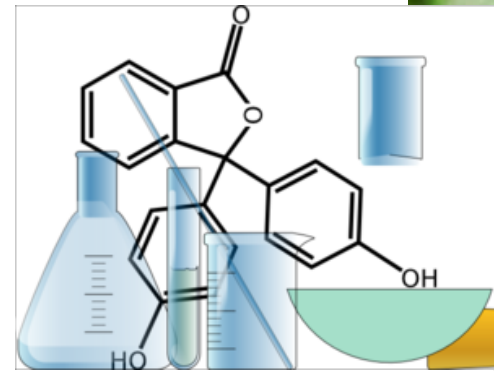


Centro privado, sin ánimo de lucro

Corporación Corpogen



1995



El camino



El camino



Investigación

1995



3 Investigadores
1 Proyecto

2014



20-30 Investigadores
Múltiples Proyectos (N/Int)
Entrenamientos
Productos & Servicios

Centro Investigación, I & D

El proceso...

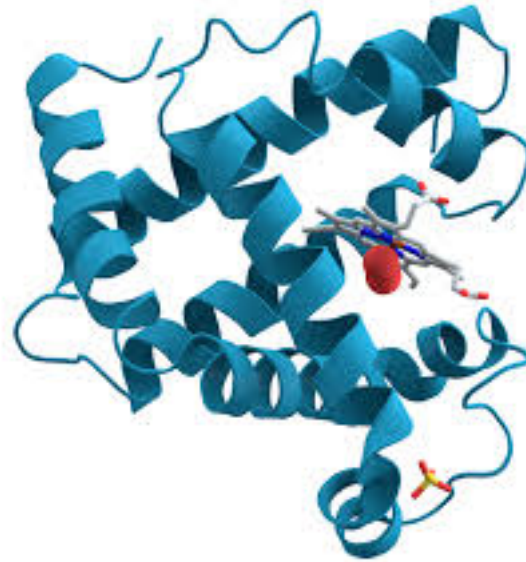
Why
Success
Always
Starts with
Failure

Adapt

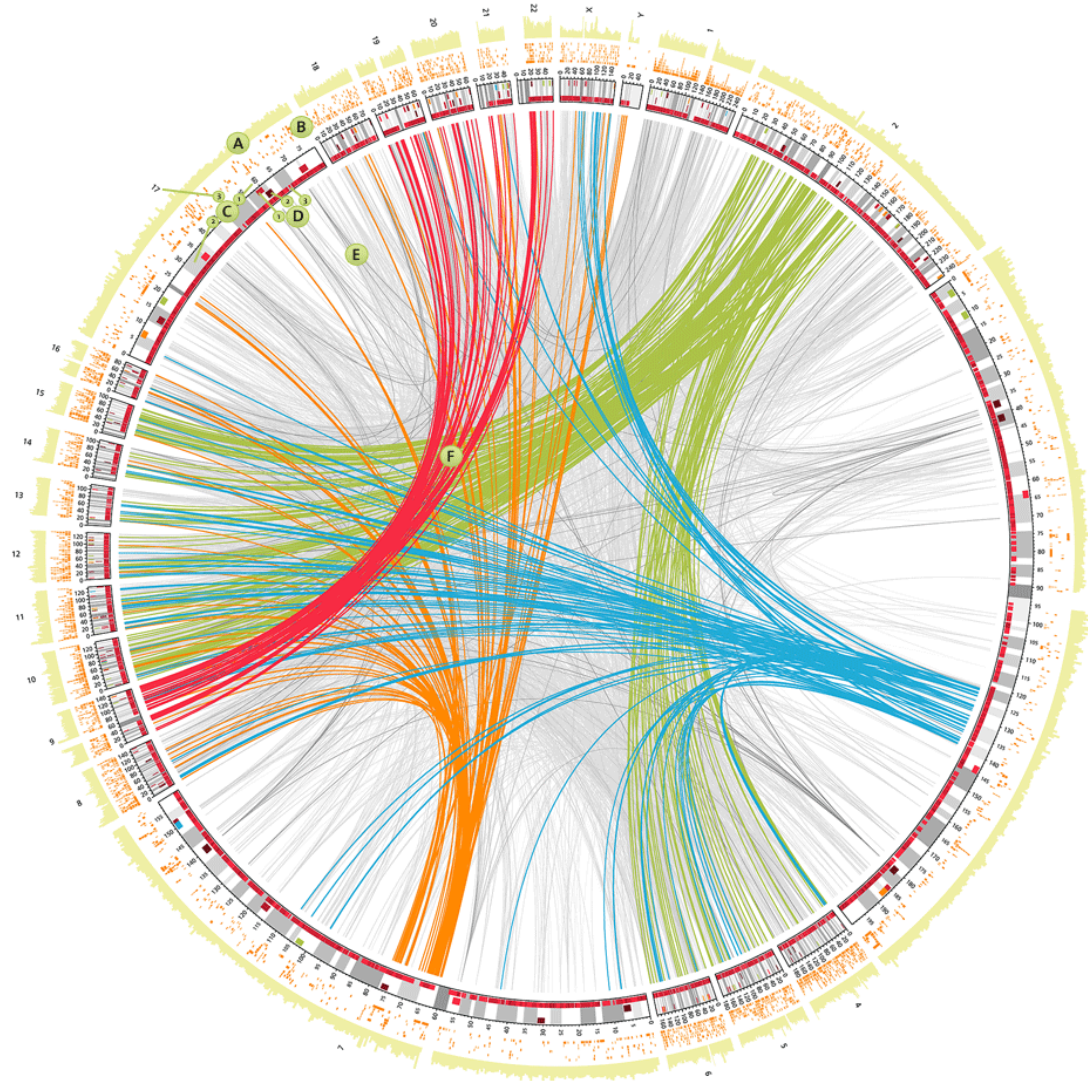
Tim
Harford

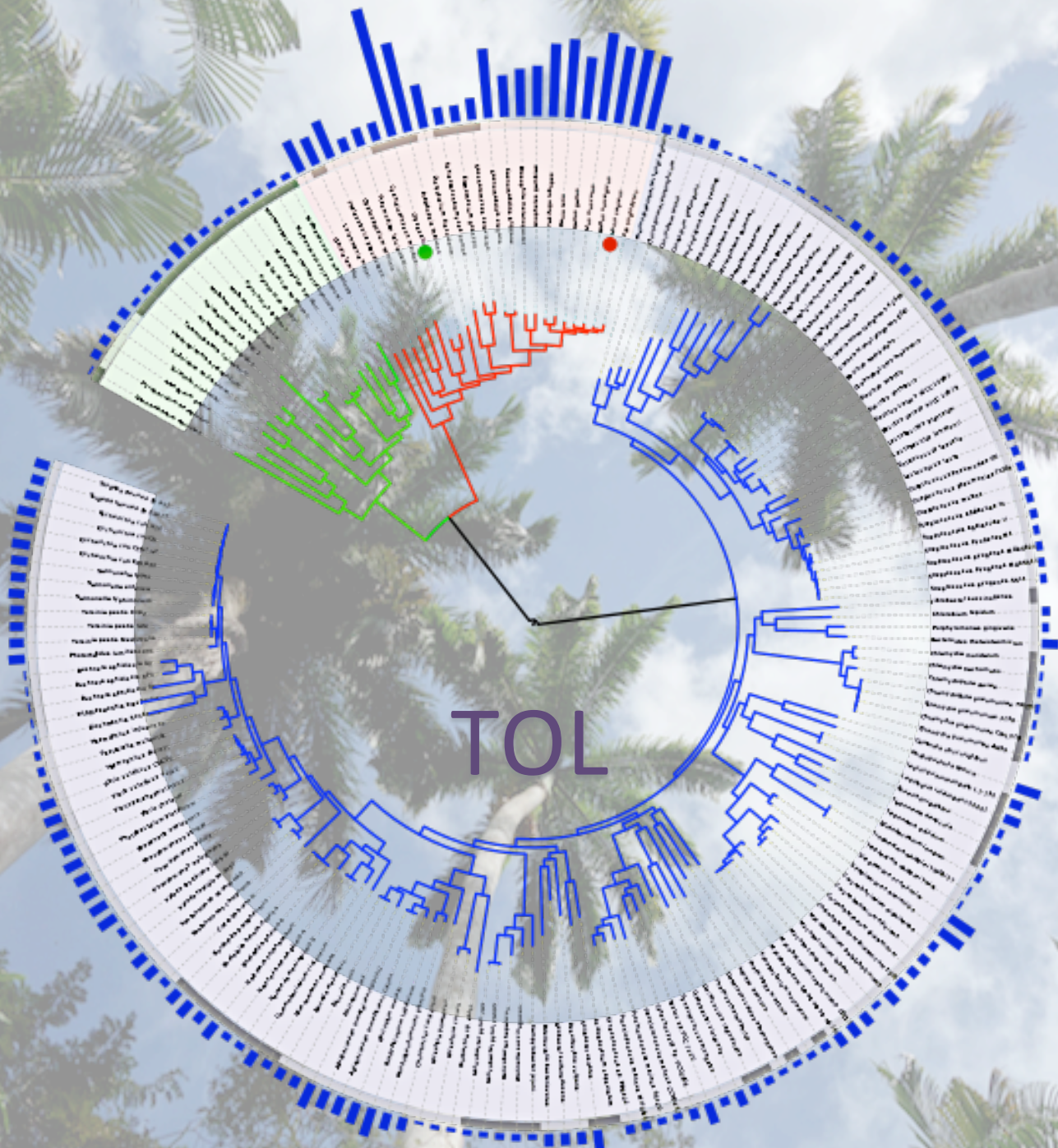


El comienzo



Tecnologías emergentes





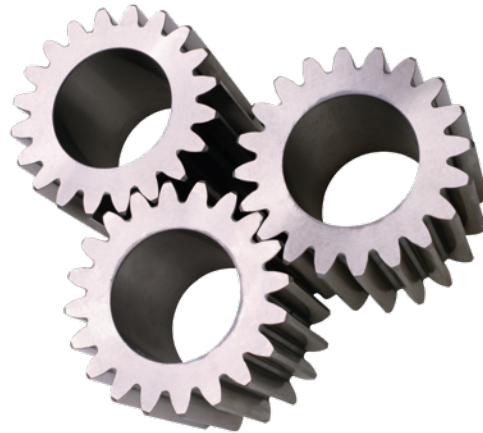
TOL

Nuevas tecnologías investigación y desarrollo

Oportunidades



Retos



Riesgos



Genómica y Bioinformática de Ambientes Extremos



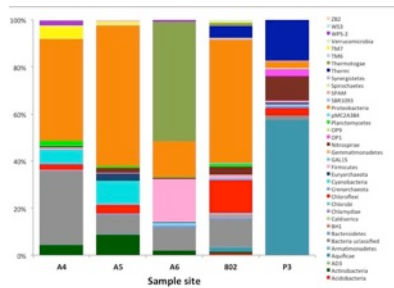
U Javeriana, Corpogen, U Nacional, U Andes,
ParqueSoft, U Valle, U Cauca, U Caldas

Metagenómica/Bioprospección

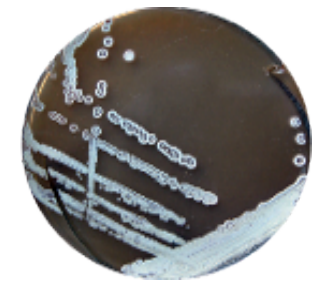
Metagenómica

Análisis del contenido genómico de una comunidad

Ecosistemas



Bioprospección

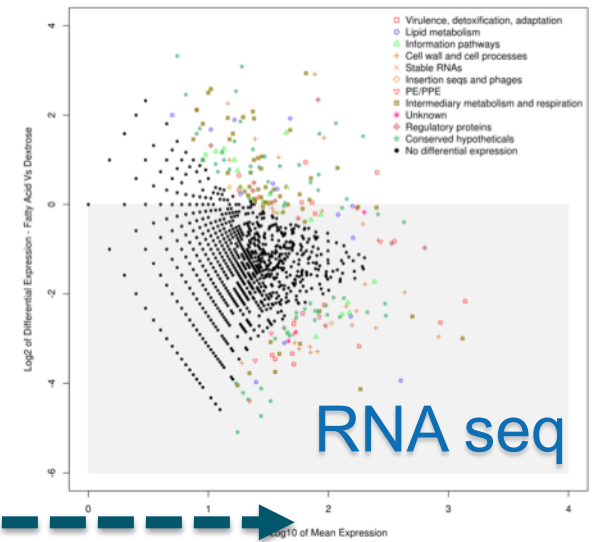
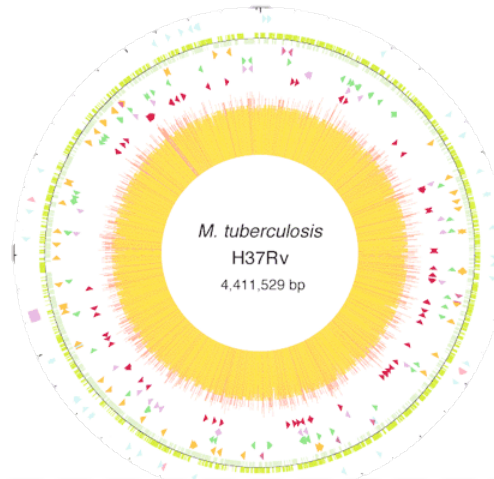


- Taxonomía
- Funciones metabólicas

- Tamizajes
- Genómica

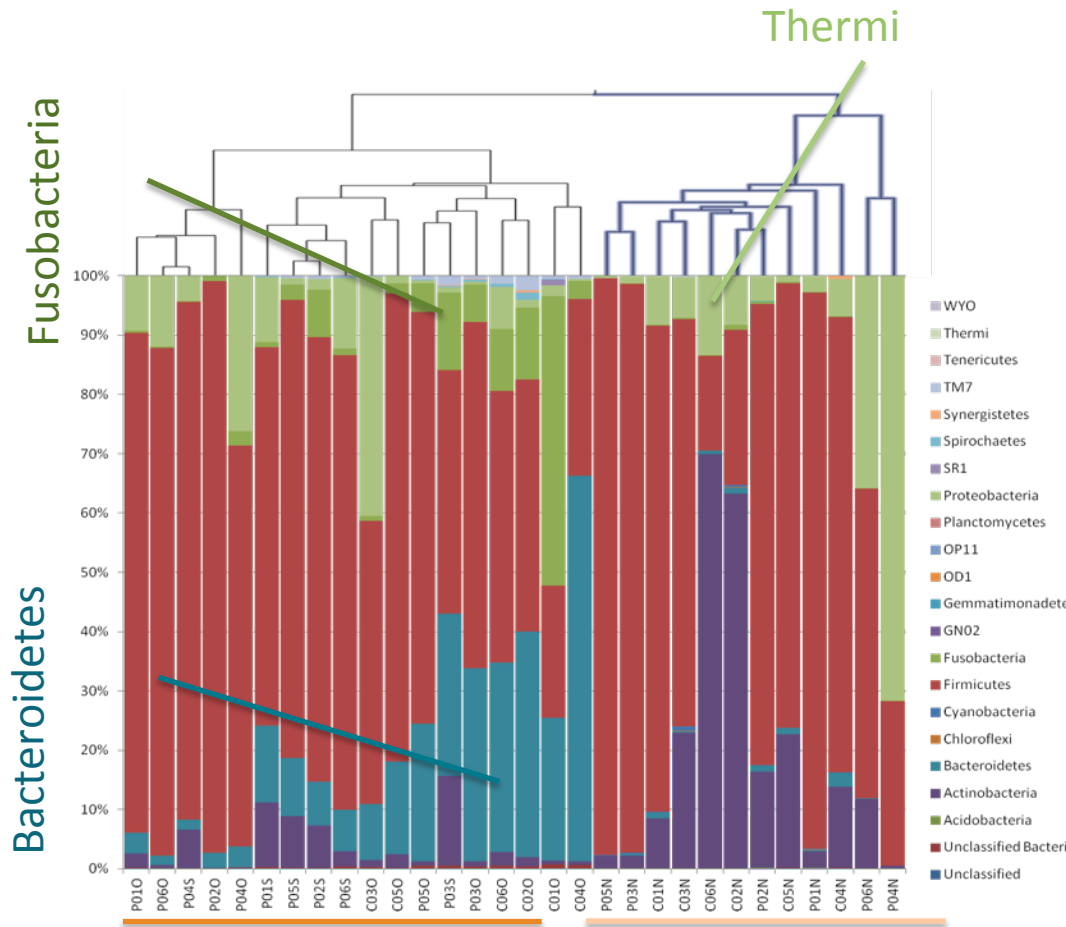
Bioinformática

Investigación en TB



Biomarcadores - diagnóstico

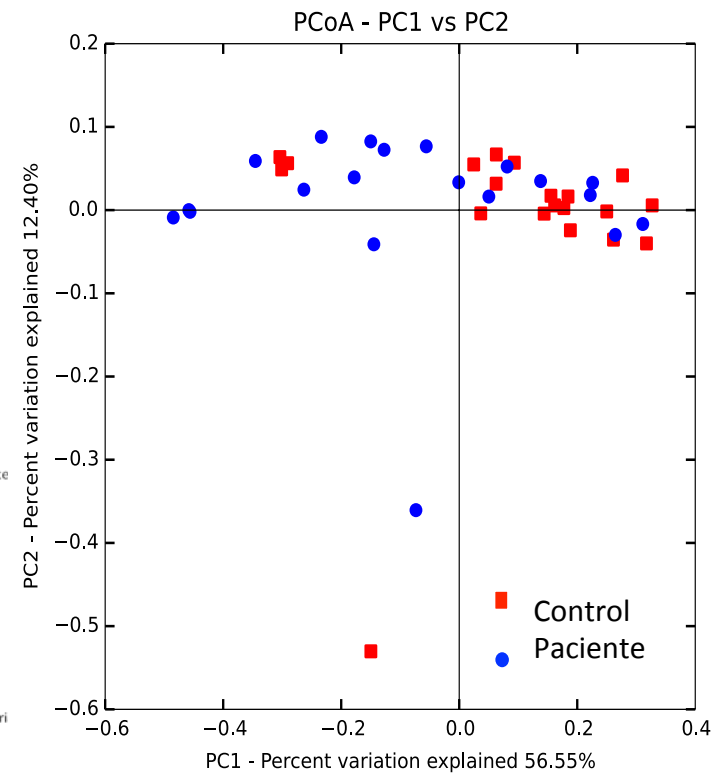
Microbiota y TB



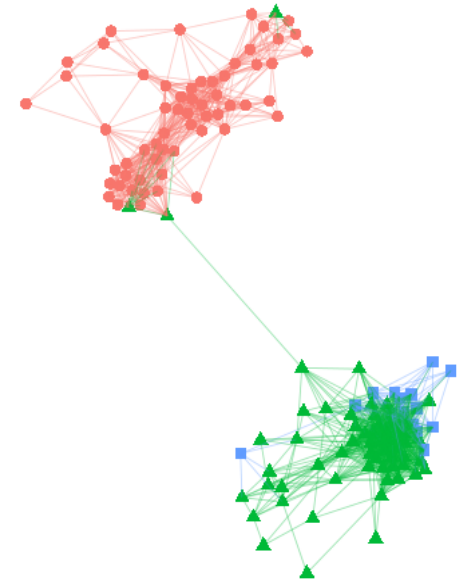
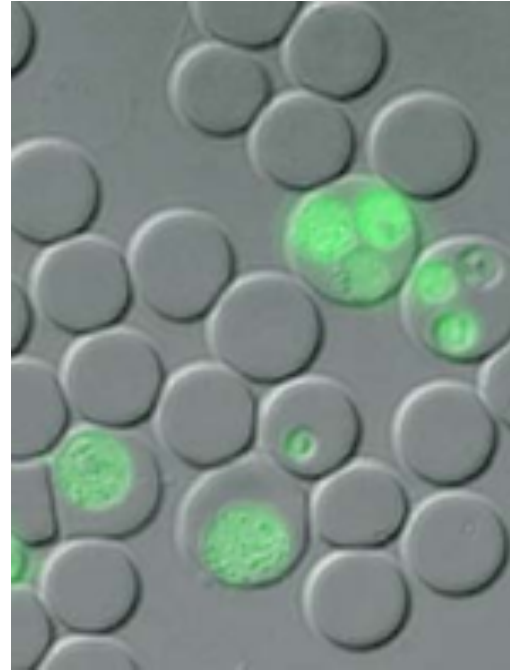
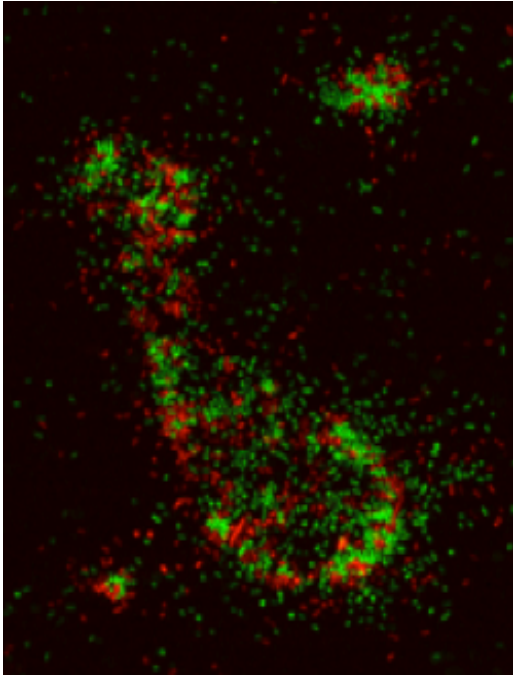
Oro/Espuito

Nasal

Orofaringe



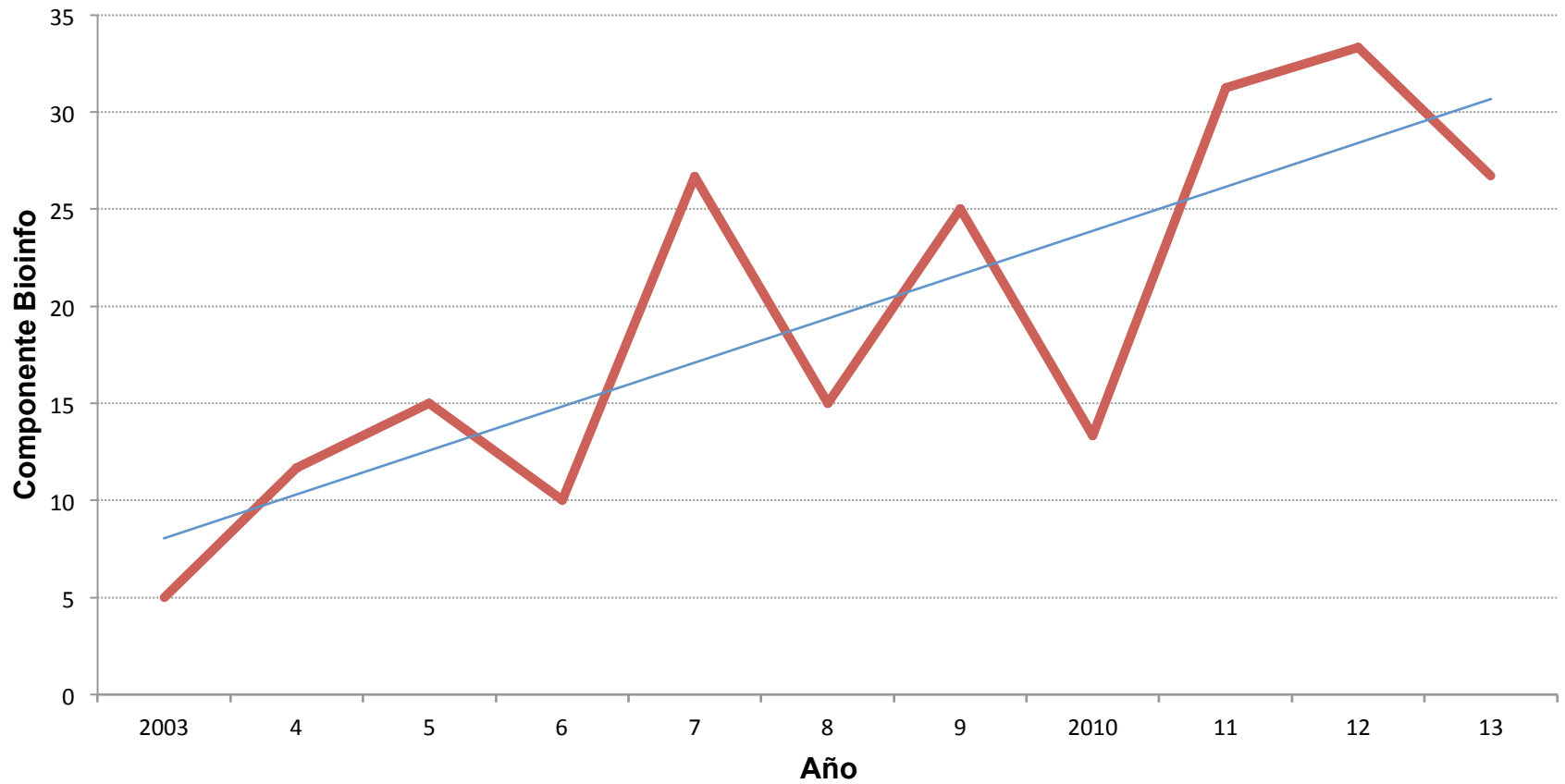
Nuevos desarrollos



Proyectos: Resistencia bacteriana/
Anti-maláricos en metagenomas

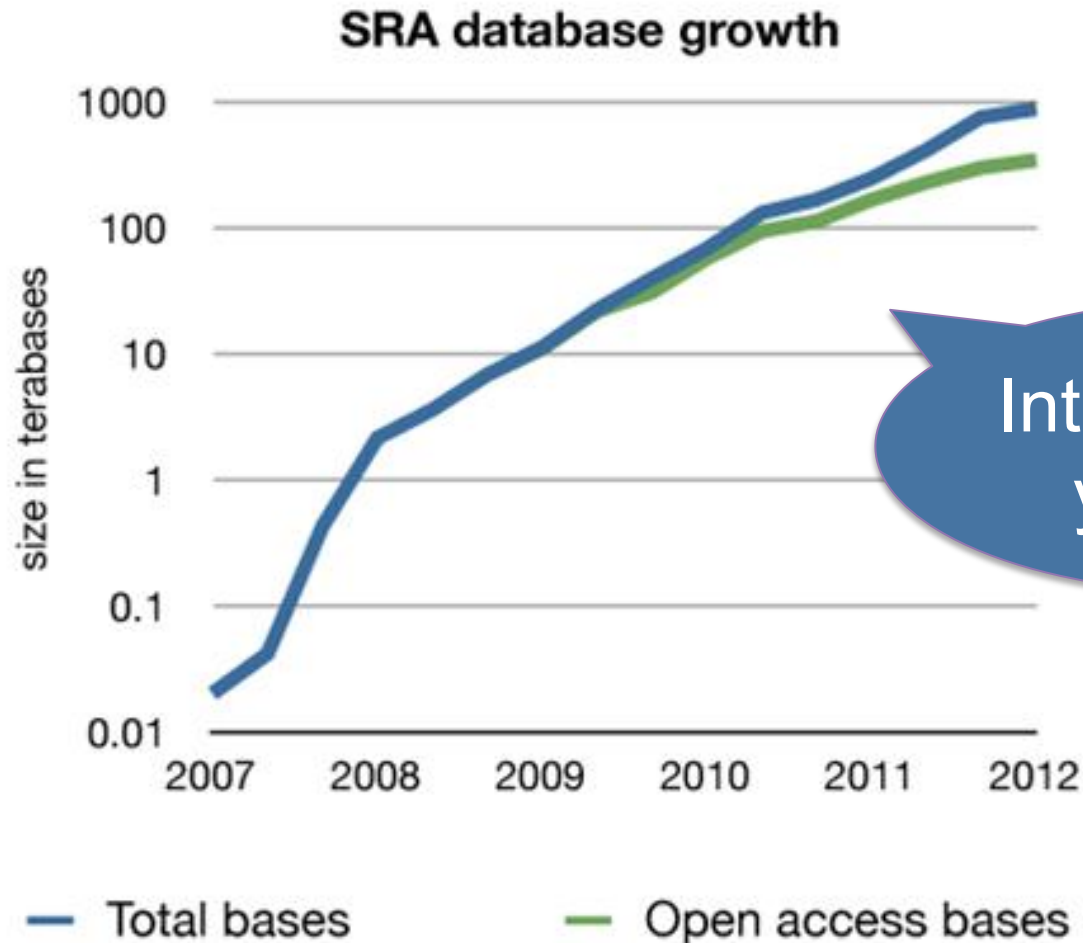
Oferta genómica/
bioinformática

Bioinformática en CG





Era genómica y digital



Interpretación
y análisis

Big Data

The
Economist

World politics

Business & finance

Economics

Science & technology

Culture

Unreliable research

Trouble at the lab

Scientists like to think of science as self-correcting. To an alarming degree, it is not

Oct 19th 2013 | From the print edition

 Like

19k

 Tweet

1,890



Muchas Gracias

- ▶ **María Mercedes Zambrano**
- ▶ mzambrano@corpogen.org
- ▶ www.corpogen.org